



Activity

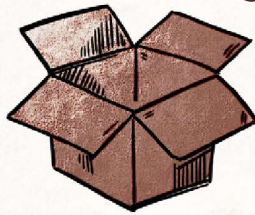
The letter that Nilavoli has is written by the mysterious Raven.
Help the Guardians locate The End Bug!

Dear Nilavoli,

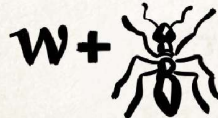
I send clues to worthy friends like you in the hopes that once you know what I know, we may all restore the end to its proper place. Still, I cannot speak plainly, for it is in my nature to pose puzzles and riddles to everyone. You see, only I possess the gift to see into the future, and I cannot share my knowledge without testing you first.

First, you must show that you have a flexible mind. Solve these rebus puzzles.
(Hint: The answers are all popular sayings!)

Think



THINK OUT OF THE BOX



WASTE

NOT

WANT

NOT

